

QUALITY CONSTRUCTION. TRUSTED SERVICE.

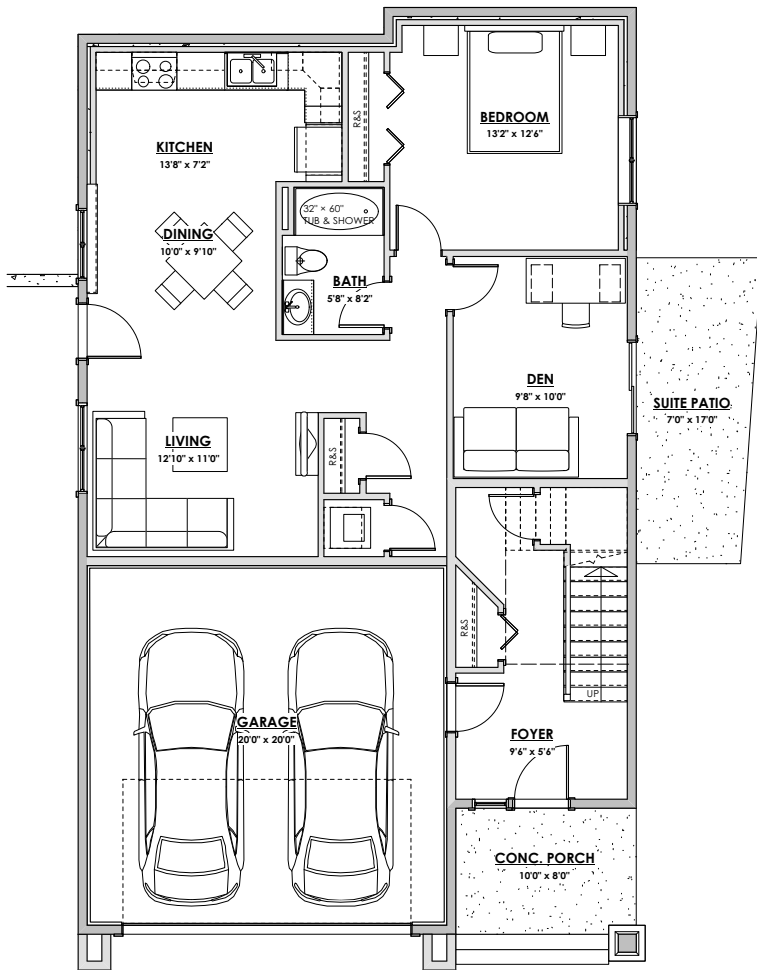
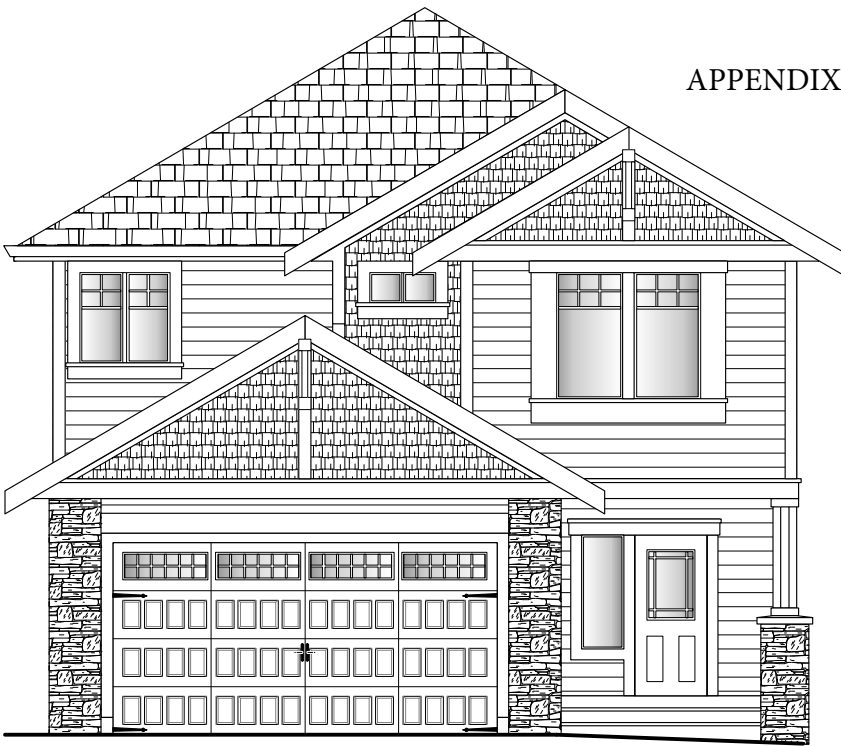
LOT 47
209 CASPIAN DRIVE
'ADMIRAL' CRAFTSMAN

*NOTE: In the interest of maintaining high standards, the developer reserves the right to modify plans, specifications and design without prior notice. Drawings contained within are artist renderings only.

Sizes and dimensions are approximate and may vary with actual plan and survey. Exterior style may change pending municipal approval.

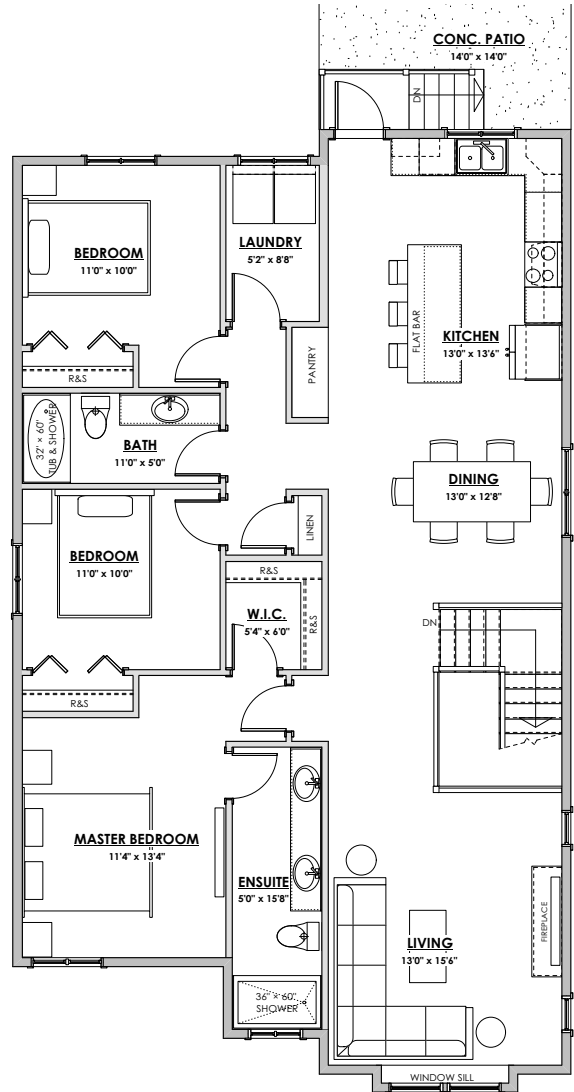
Retaining wall location and types may vary and are subject to municipal, engineering or developer discretion. Subject to change without notice.

Furniture as shown on plans are for layout purposes only and are not included in the sale.



LOWER FLOOR

1060 sq.ft.



MAIN FLOOR

1449 sq.ft.

LIVING AREA

Primary: 1631 sq.ft.
Suite: 878 sq.ft.
Total: 2509 sq.ft.

OTHER

Garage: 441 sq.ft.

Initials Required



QUALITY CONSTRUCTION. TRUSTED SERVICE.

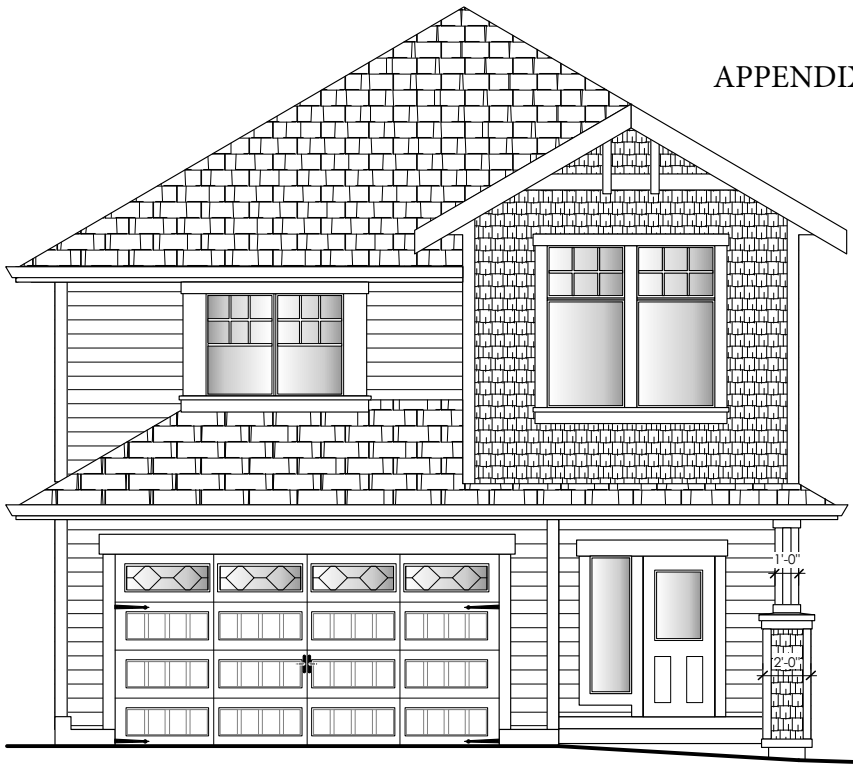
LOT 49
217 CASPIAN DRIVE
'ADMIRAL' TRADITIONAL

*NOTE: In the interest of maintaining high standards, the developer reserves the right to modify plans, specifications and design without prior notice. Drawings contained within are artist renderings only.

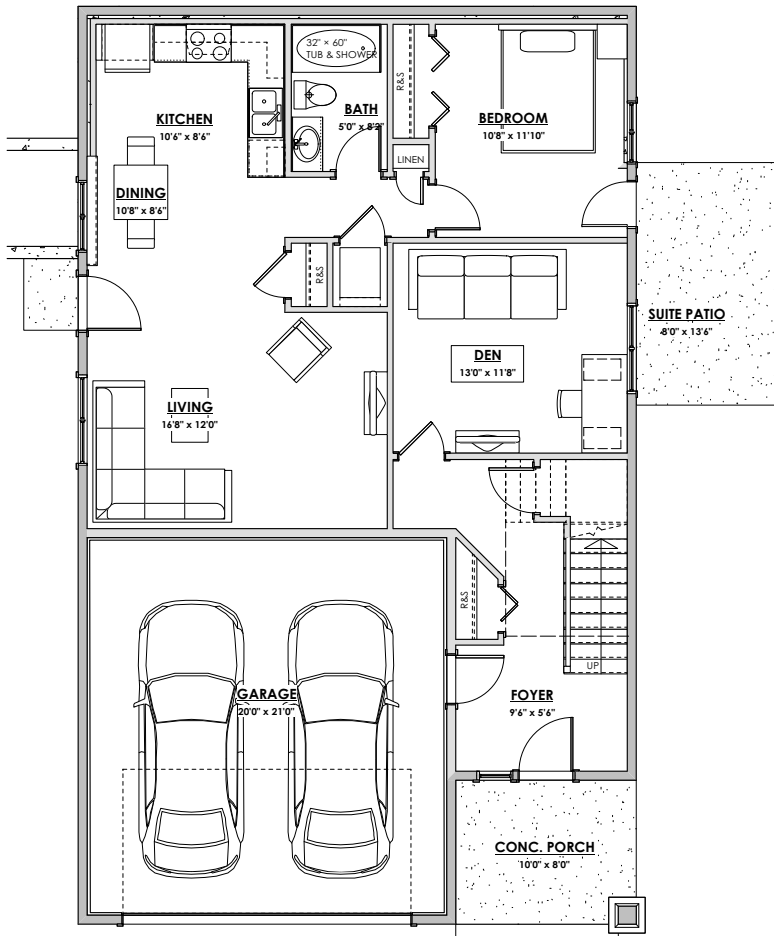
Sizes and dimensions are approximate and may vary with actual plan and survey. Exterior style may change pending municipal approval.

Retaining wall location and types may vary and are subject to municipal, engineering or developer discretion. Subject to change without notice.

Furniture as shown on plans are for layout purposes only and are not included in the sale.



Front Elevation



LOWER FLOOR

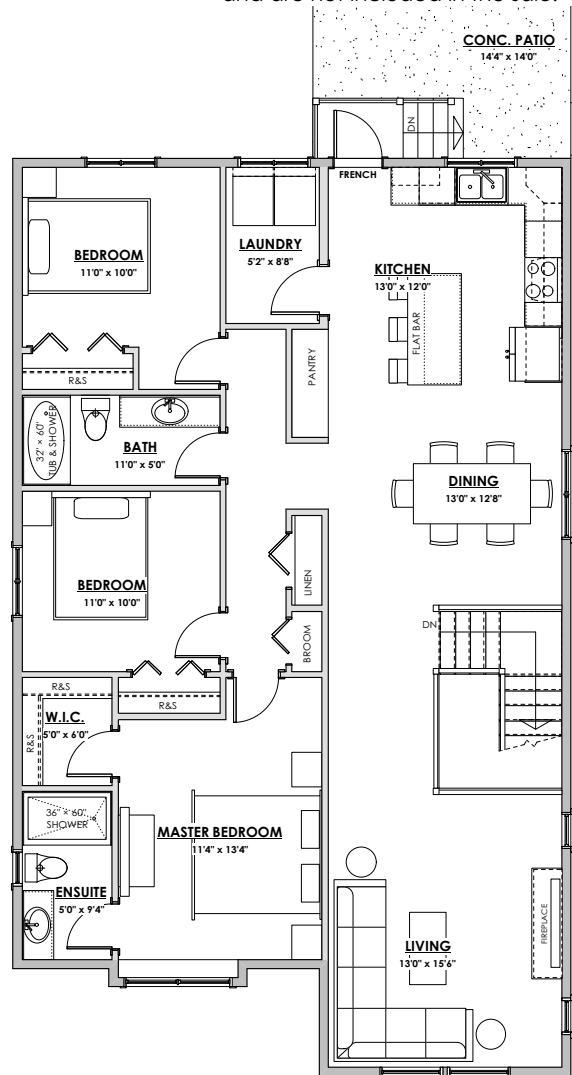
1039 sq.ft.

LIVING AREA

Primary: 1766 sq.ft.
Suite: 680 sq.ft.
Total: 2446 sq.ft.

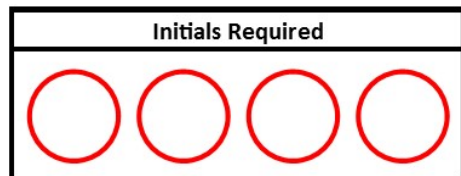
OTHER

Garage: 462 sq.ft.



MAIN FLOOR

1407 sq.ft.





QUALITY CONSTRUCTION. TRUSTED SERVICE.

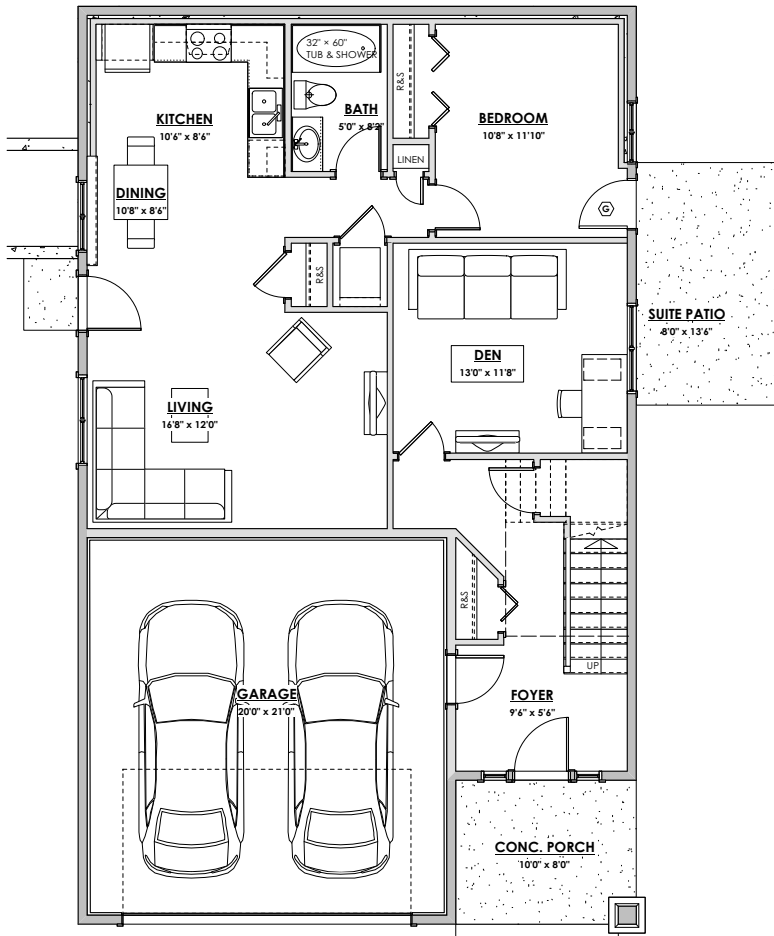
LOT 51
225 CASPIAN DRIVE
'ADMIRAL' COASTAL

*NOTE: In the interest of maintaining high standards, the developer reserves the right to modify plans, specifications and design without prior notice. Drawings contained within are artist renderings only.

Sizes and dimensions are approximate and may vary with actual plan and survey. Exterior style may change pending municipal approval.

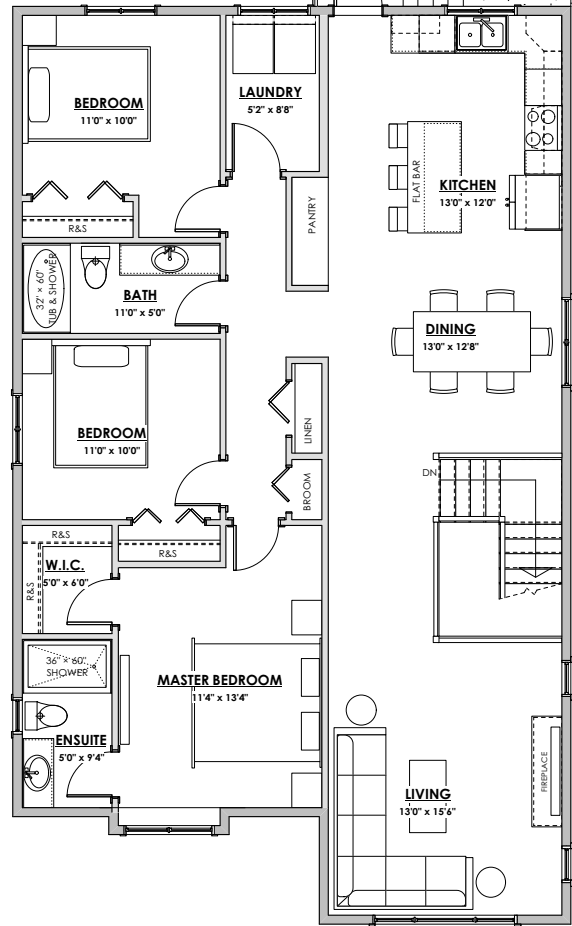
Retaining wall location and types may vary and are subject to municipal, engineering or developer discretion. Subject to change without notice.

Furniture as shown on plans are for layout purposes only and are not included in the sale.



LOWER FLOOR

1039 sq.ft.



MAIN FLOOR

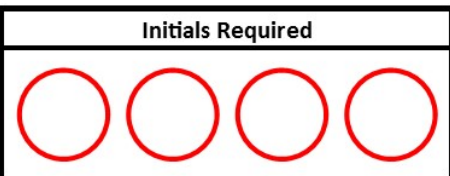
1407 sq.ft.

LIVING AREA

Primary: 1766 sq.ft.
 Suite: 680 sq.ft.
 Total: 2446 sq.ft.

OTHER

Garage: 462 sq.ft.



QUALITY CONSTRUCTION. TRUSTED SERVICE.

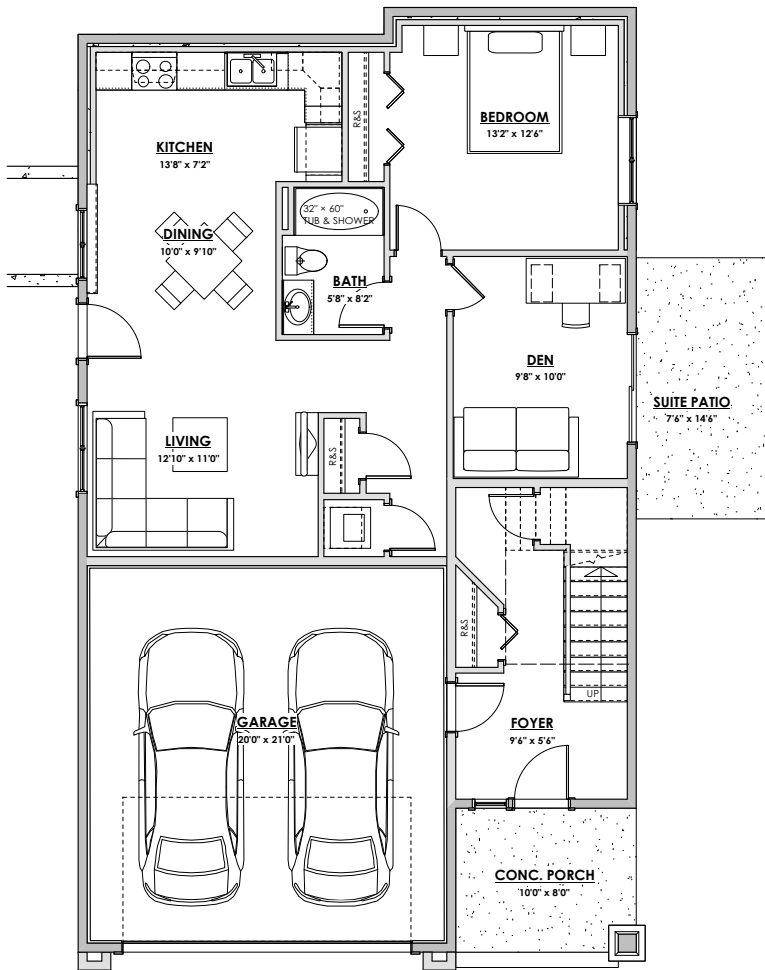
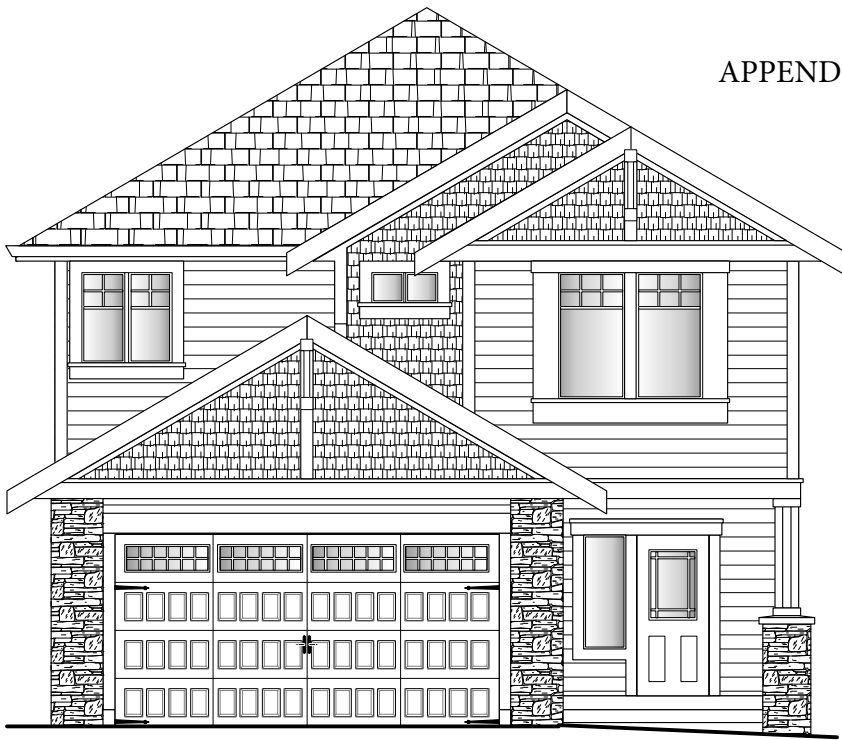
LOT 53
233 CASPIAN DRIVE
'ADMIRAL' CRAFTSMAN

*NOTE: In the interest of maintaining high standards, the developer reserves the right to modify plans, specifications and design without prior notice. Drawings contained within are artist renderings only.

Sizes and dimensions are approximate and may vary with actual plan and survey. Exterior style may change pending municipal approval.

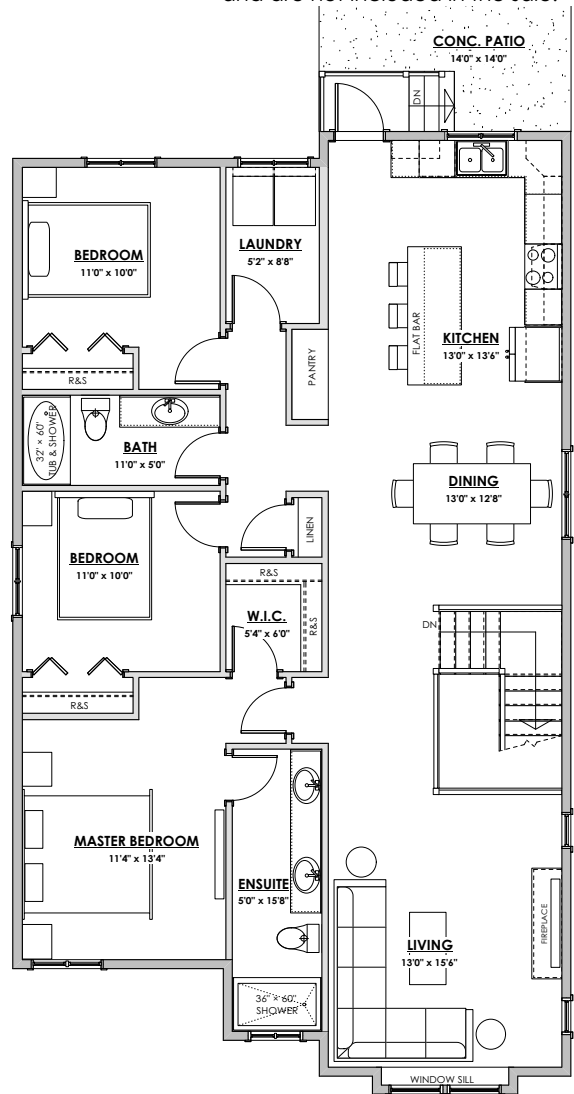
Retaining wall location and types may vary and are subject to municipal, engineering or developer discretion. Subject to change without notice.

Furniture as shown on plans are for layout purposes only and are not included in the sale.



LOWER FLOOR

1060 sq.ft.



MAIN FLOOR

1449 sq.ft.

LIVING AREA

Primary: 1631 sq.ft.
 Suite: 878 sq.ft.
 Total: 2509 sq.ft.

OTHER

Garage: 462 sq.ft.

Initials Required

